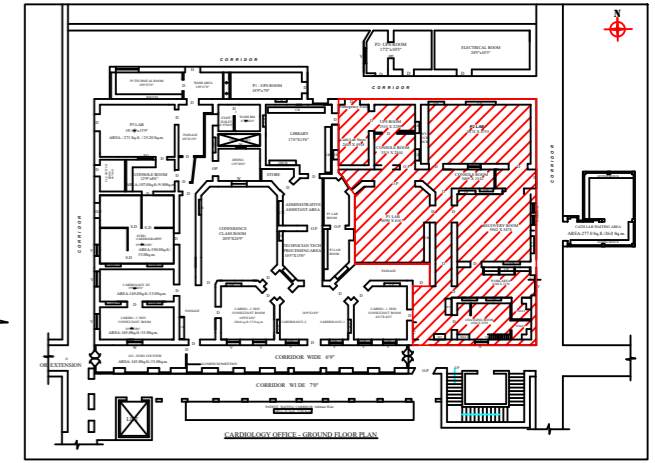
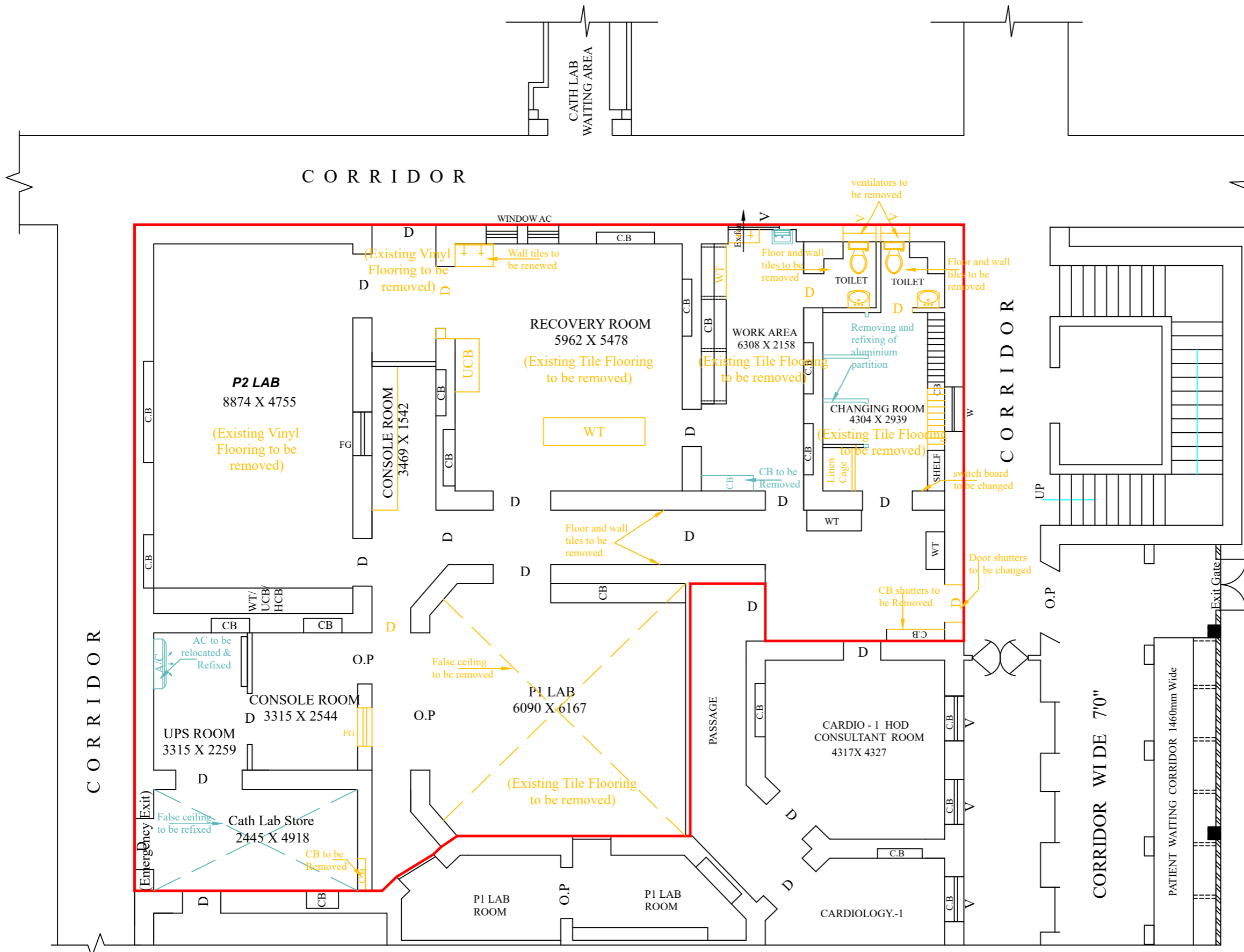


KEYPLAN:-



REFERENCE:

- DEMOLITION SHOWN IN
- EXISTING SHOWN IN
- REMOVING AND REFIXING SHOWN IN



TENDER PURPOSE ONLY

CARDIOLOGY OFFICE - GROUND FLOOR PLAN

CHRISTIAN MEDICAL COLLEGE -VELLORE.

MODIFICATION OF EXISTING P1 & P2 LAB TO CATH LAB IN MAIN BUILDING GROUND FLOOR AT CMC TOWN CAMPUS

GROUND FLOOR PLAN (PART) DEMOLITION

CHKD BY: DEVAGI	DATE : 13.05.2024	PLANNING ENGINEER
DRAWN: YAMUNA	DRG.NO: CMC/GF/C/01	

